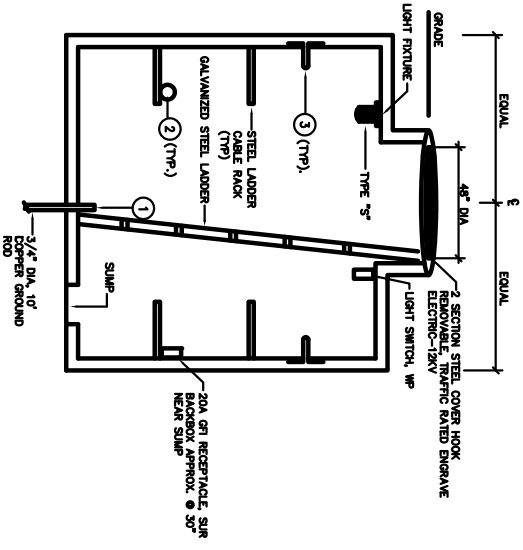


TYPICAL MANHOLE

- NOTES:
1. PROVIDE RATED GALVANIZED MANHOLE LADDER.
  2. DETAIL IS FOR REFERENCE ONLY. VERIFY DIMENSIONS AND REQUIREMENTS WITH MANUFACTURER CUT SHEETS PRIOR TO INSTALLATION.
  3. PROVIDE 6" COMPACTED CRUSHED ROCK BASE OVER 2" COMPACTED SAND BASE FOR LEVELING.
  4. INSTALL MANHOLE PER MANUFACTURER REQUIREMENTS.



- NOTES:
1. GROUND & BOND ALL NON-CURRENT CARRIERS CONDUCTORS TO GROUND ROD NEAR WALL
  2. CABLE SHALL BE FULLY LOOPED (360°) IN MANHOLE & SECURED TO CABLE RACK
  3. PULLING IRON EYE ON EACH WALL

SECTION A

MANHOLE & CABLE RACK SECTION

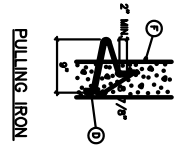
E-09

NTS

MARCH 2018

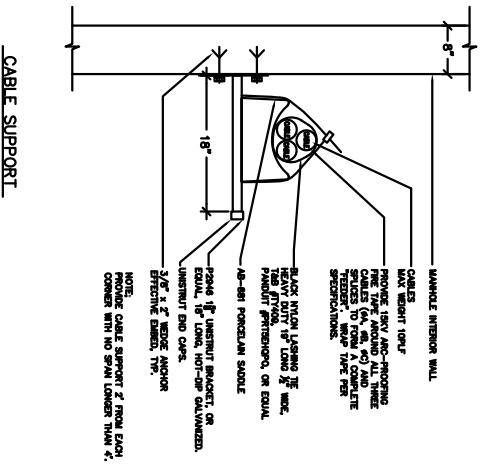


HOOK TYPE INSULATOR



PULLING IRON

ITEM	BILL OF MATERIALS
①	CABLE RACK HOT DIP GALVANIZED
②	INSULATOR WELDED SUPPORT, 8"
③	HOOK TYPE INSULATOR
④	PULLING IRON 1/2" GALVANIZED
⑤	SLOT FOR 1/2" BOLT AND LEAD ANCHOR
⑥	8" THICK CONCRETE WALL AT 4500 PSI



CABLE SUPPORT

- NOTES:
1. PROVIDE CABLE SUPPORT 2" FROM EACH CORNER WITH NO SPAN LONGER THAN 4".