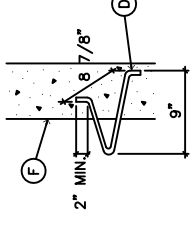
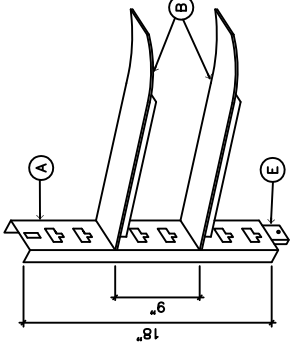




HOOK TYPE INSULATOR

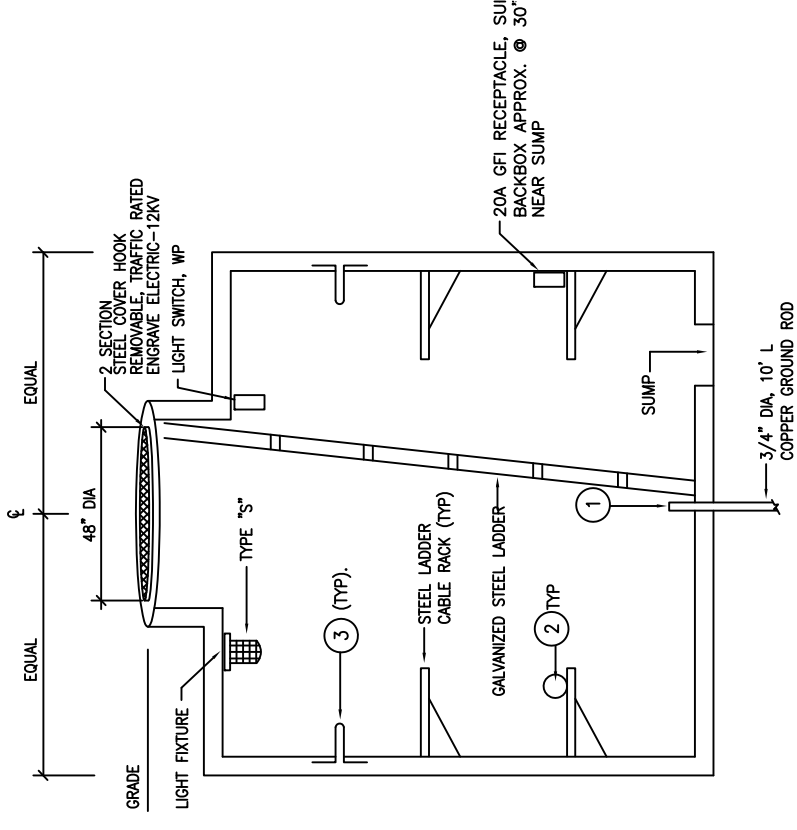


PULLING IRON

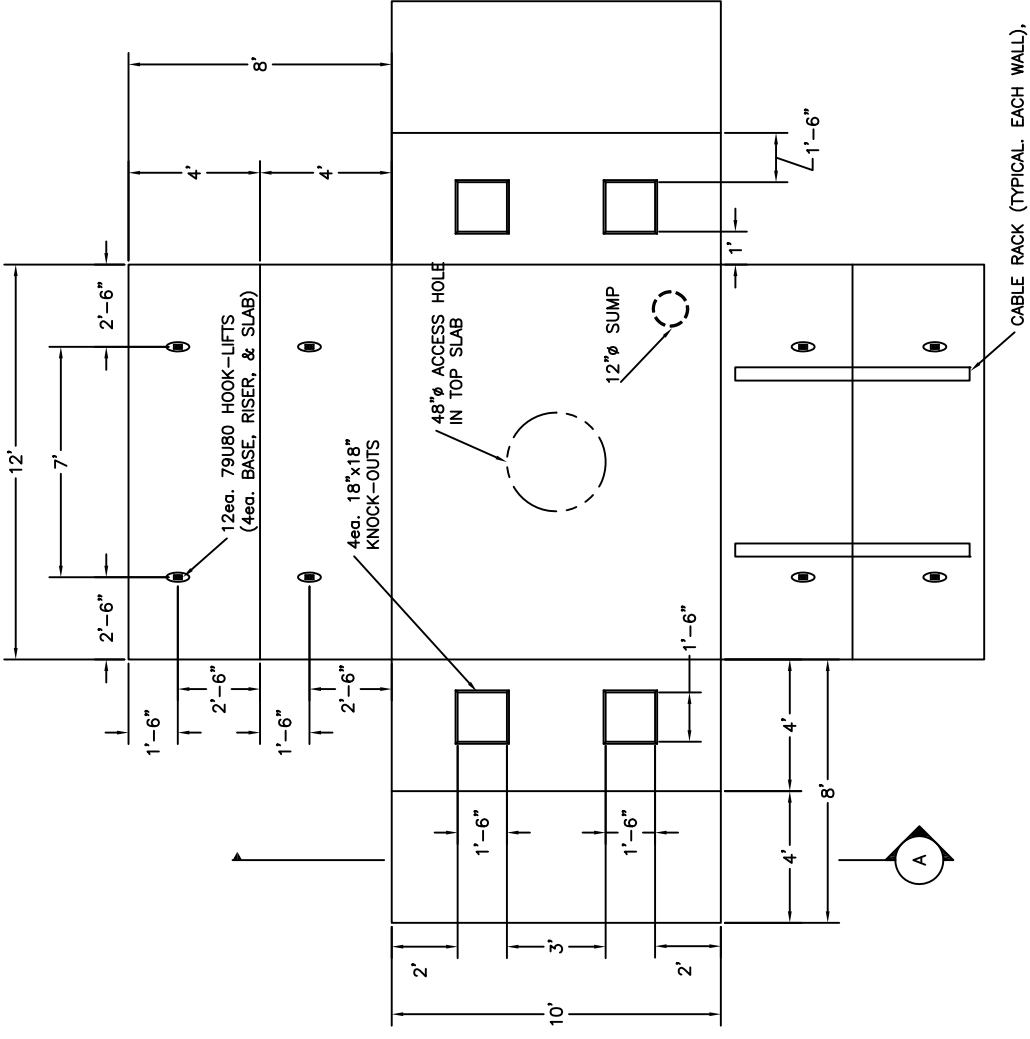


CABLE RACK

ITEM	BILL OF MATERIALS
(A)	CABLE RACK HOT DIP GALVANIZED
(B)	INSULATOR WELDED SUPPORT, 8"
(C)	HOOK TYPE INSULATOR
(D)	PULLING IRON 7/8" Ø GALVANIZED
(E)	SLOT FOR 1/2" BOLT AND LEAD ANCHOR
(F)	8" THICK CONCRETE WALL AT 4500 PSI



- ① GROUND & BOND ALL NON-CURRENT CARRYING CONDUCTORS TO GROUND ROD NEAR WALL
- ② CABLE SHALL BE FULLY LOOPED (360°) IN MANHOLE & SECURED TO CABLE RACK
- ③ PULLING IRON EYE ON EACH WALL



TYPICAL MANHOLE

SECTION A

UNIVERSITY OF CALIFORNIA, DAVIS

MANHOLE AND CABLE RACK SECTION

REVISION: 2

SCALE: NONE

DATE: JULY 2011

DWN: KH APPROVED

FILE NO. E-09

CHK: ES