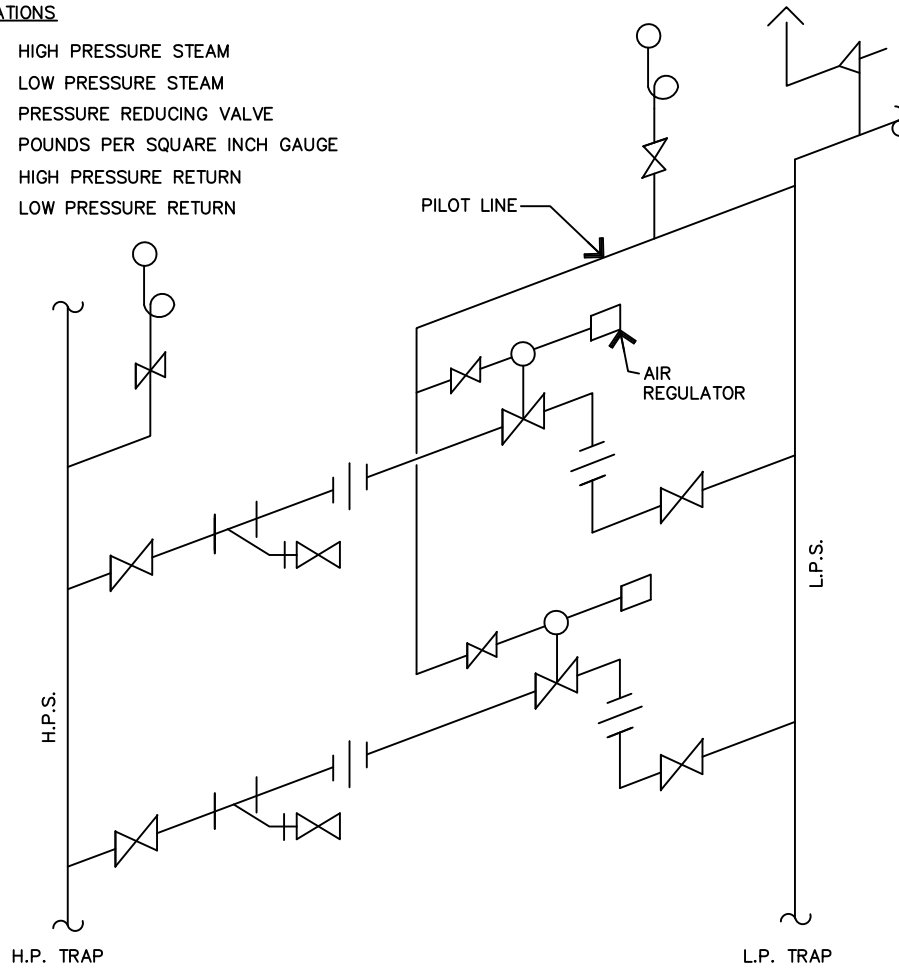


ABBREVIATIONS

H.P.S. HIGH PRESSURE STEAM
 L.P.S. LOW PRESSURE STEAM
 P.R.V. PRESSURE REDUCING VALVE
 P.S.I.G. POUNDS PER SQUARE INCH GAUGE
 H.P.R. HIGH PRESSURE RETURN
 L.P.R. LOW PRESSURE RETURN



LEGEND

-  GATE VALVE
-  UNION
-  PRESSURE GAUGE
-  Y STRAINER
-  STEAM PRV
-  SAFETY RELIEF VALVE
-  ANTI SIPHON
-  VENT THROUGH ROOF

NOTES

1. PROVIDE MINIMUM OF (2) LESLIE AIR OPERATED PRV'S STYLE GPK OR EQUAL.
2. RUN TRAP DISCHARGES INDEPENDENT FOR H.P.R. & L.P.R.
3. IF AIR IS NOT AVAILABLE USE LESLIE INTERNAL PILOT GPKP OR EQUAL.
4. ALL PIPE FITTINGS MUST BE RATED FOR 250 psig ON THE 150 psig SIDE OF THE PRV. ALL NIPPLES ON SAME SIDE SCHEDULE 80.
5. 100 psig AIR REQUIRED ON HIGH SIDE OF AIR REGULATOR.

UNIVERSITY OF CALIFORNIA, DAVIS		
STEAM PRESSURE REDUCING STATION		
REVISION: 1		
SCALE: NONE	DATE: JULY 08	
DWN: KH CHK: VG	APPROVED	FILE NO. ST-05