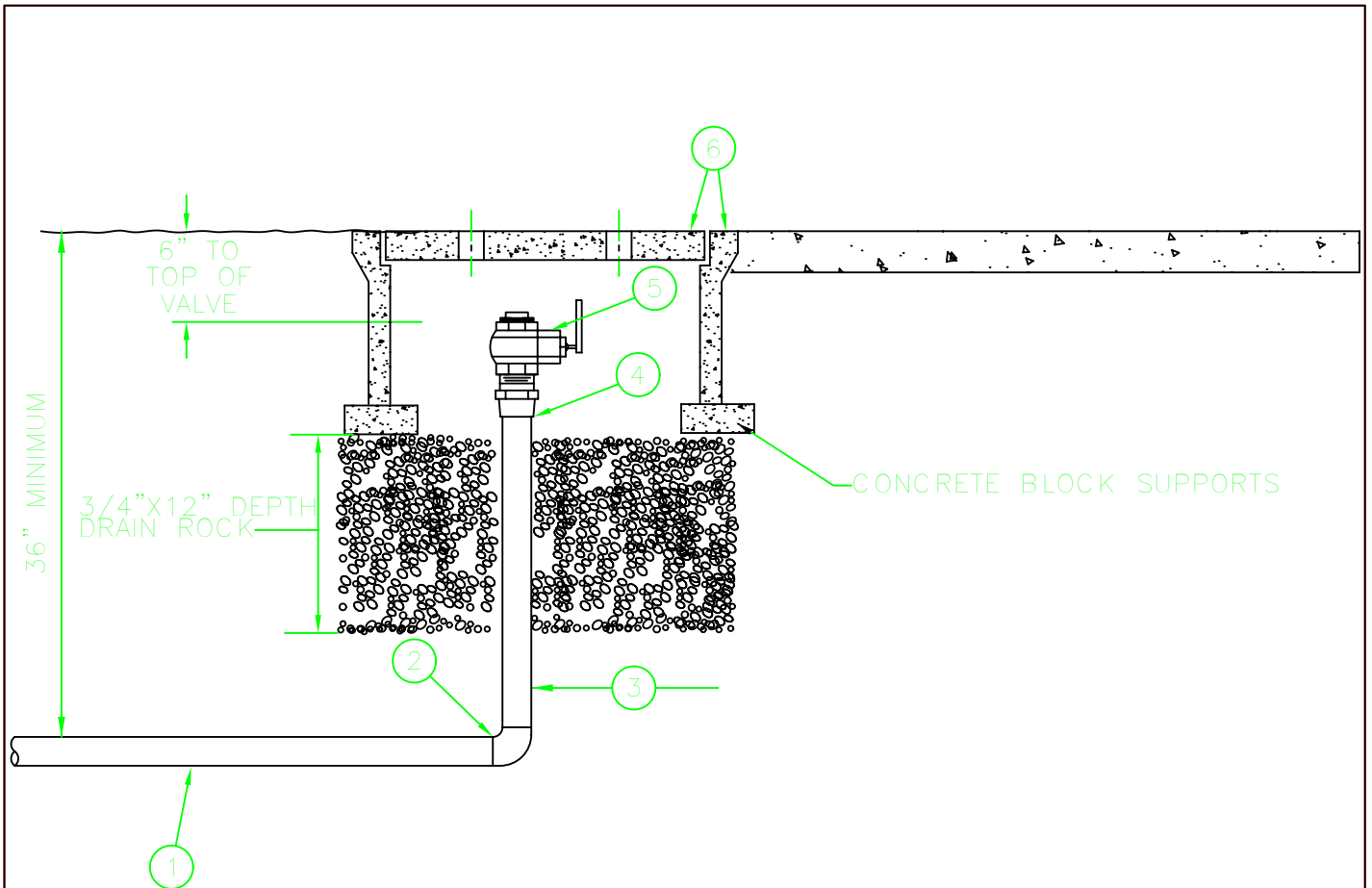


NOTES:

1. 2" TYPE K COPPER TUBING.
2. SILLFOSS ALL PIPE JOINTS.
3. WRAP PIPE WITH 40 MIL TOTAL PVC PROTECTION TAPE.
4. SOFT SOLDER MALE ADAPTER.
5. FULL PORT BRONZE BALL VALVE & PLUG. FORD MUELLER OR EQUIV.
6. METER BOX AND LID.

NON TRAFFIC AREAS USE CHRISTY B12 BOX WITH B12G LID.  
 TRAFFIC AREAS USE CHRISTY B1017 BOX WITH B1017-JH COVE



NOTES:

1. 2" TYPE K COPPER TUBING.
2. SILLFOSS ALL PIPE JOINTS.
3. WRAP PIPE WITH 40 MIL TOTAL PVC PROTECTION TAPE.
4. SOFT SOLDER MALE ADAPTER.
5. FULL PORT BRONZE BALL VALVE & PLUG. FORD MUELLER OR EQUAL.
6. METER BOX AND LID.

NON TRAFFIC AREAS USE CHRISTY B12 BOX WITH B12G LID.  
 TRAFFIC AREAS USE CHRISTY B1017 BOX WITH B1017-JH COVER.

NOTES TO DESIGN PROFESSIONAL:

1. VERIFY AND EDIT TEXT IN BRACKETS [ ].