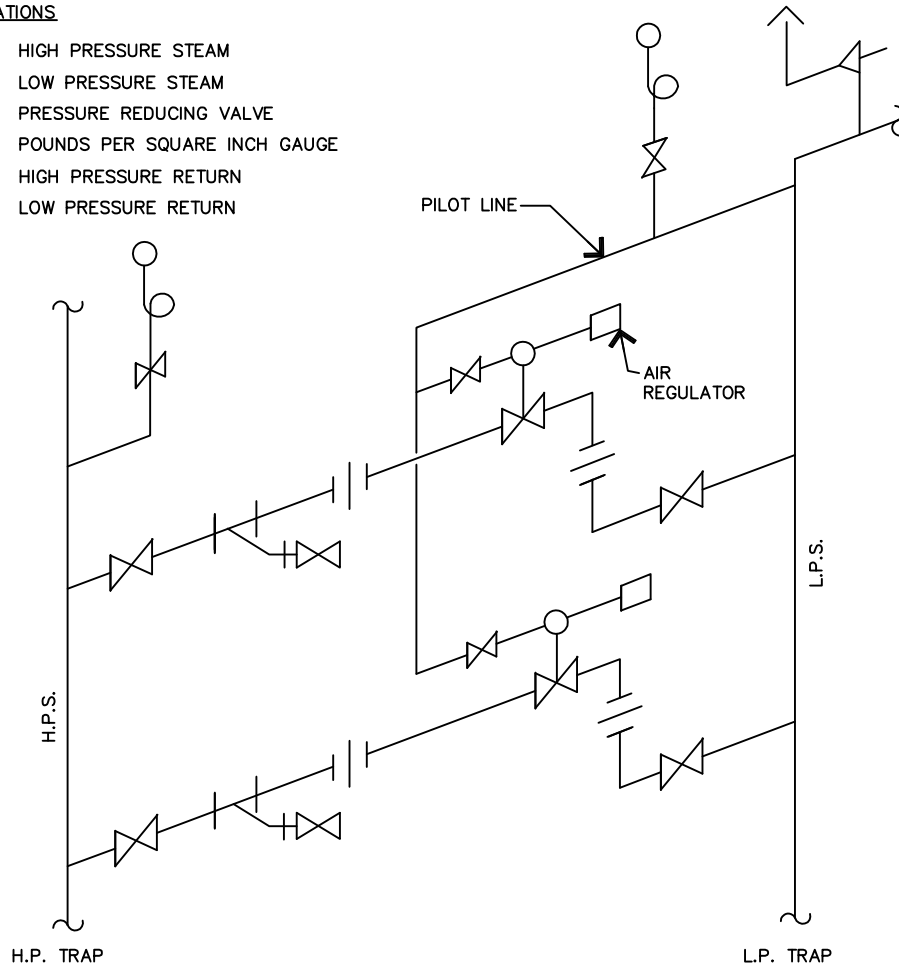


**ABBREVIATIONS**

H.P.S. HIGH PRESSURE STEAM  
 L.P.S. LOW PRESSURE STEAM  
 P.R.V. PRESSURE REDUCING VALVE  
 P.S.I.G. POUNDS PER SQUARE INCH GAUGE  
 H.P.R. HIGH PRESSURE RETURN  
 L.P.R. LOW PRESSURE RETURN



**LEGEND**

-  GATE VALVE
-  UNION
-  PRESSURE GAUGE
-  Y STRAINER
-  STEAM PRV
-  SAFETY RELIEF VALVE
-  ANTI SIPHON
-  VENT THROUGH ROOF

**NOTES**

1. PROVIDE MINIMUM OF (2) LESLIE AIR OPERATED PRV'S STYLE GPK OR EQUAL.
2. RUN TRAP DISCHARGES INDEPENDENT FOR H.P.R. & L.P.R.
3. IF AIR IS NOT AVAILABLE USE LESLIE INTERNAL PILOT GPKP OR EQUAL.
4. ALL PIPE FITTINGS MUST BE RATED FOR 250 psig ON THE 150 psig SIDE OF THE PRV. ALL NIPPLES ON SAME SIDE SCHEDULE 80.
5. 100 psig AIR REQUIRED ON HIGH SIDE OF AIR REGULATOR.