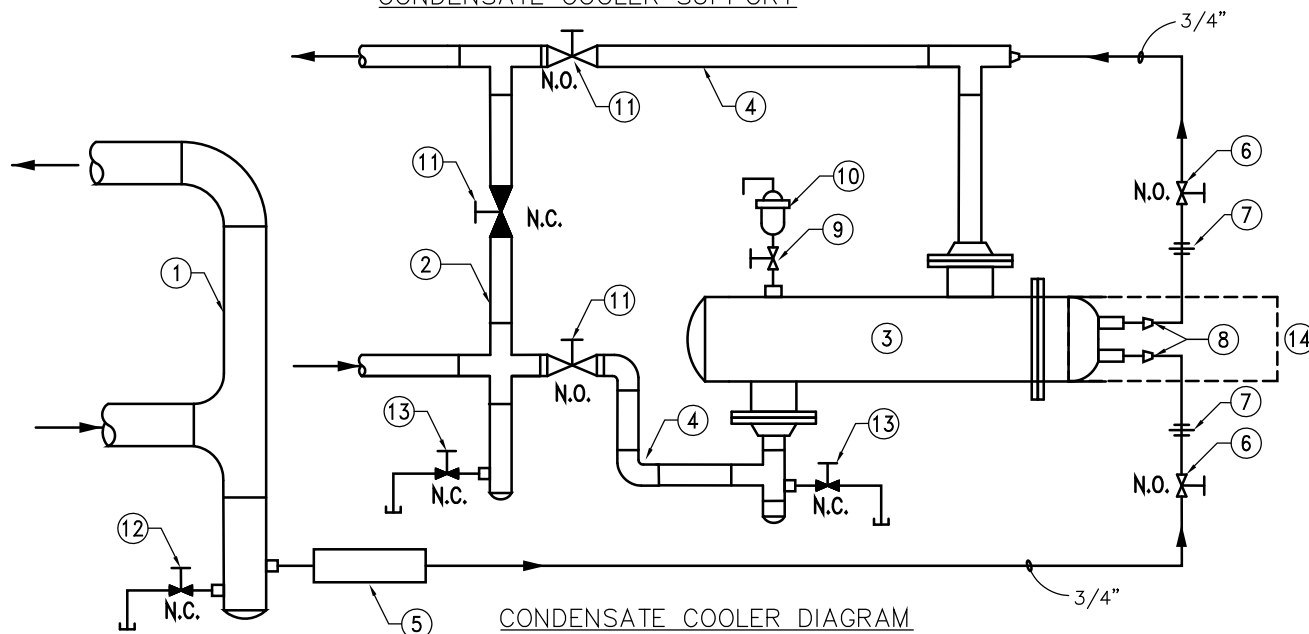


NOTES:

1. PROVIDE 2 SUPPORTS PER CONDENSATE COOLER.
2. ALL STEEL COMPONENTS SHALL BE HOT DIPPED GALVANIZED AFTER FABRICATION.

CONDENSATE COOLER SUPPORT



CONDENSATE COOLER DIAGRAM

NOTES:

- | | |
|---|---|
| <ol style="list-style-type: none"> ① STEAM RISER ② CONDENSATE RETURN RISER ③ CONDENSATE COOLER ④ CONDENSATE LINE TO/FROM CONDENSATE COOLER SHALL BE SAME SIZE AS MAIN CONDENSATE PIPING ⑤ STEAM TRAP SET, SEE DETAIL M-06 ISOLATION VALVE ⑥ 3/4" BALL VALVE, BRONZE, 150# SWP, FULL PORT UNION, CLASS 150, B.M.I. ⑦ REDUCER TO MATCH CONDENSATE COOLER CONNECTIONS ⑧ 1/2" BALL VALVE, BRONZE, 150# SWP, FULL PORT ⑨ HIGH POINT AIR VENT IF CONDENSATE COOLER IS MOUNTED VERTICALLY | <ol style="list-style-type: none"> ⑪ ISOLATION VALVE- SAME SIZE AS RISER GATE VALVE, BRONZE, CLASS 150, RISING STEM OR BALL VALVE, BRONZE, 150# SWP, FULL PORT ⑫ DRAIN VALVE AT STEAM RISER LOW POINT 3/4" BALL VALVE, BRONZE, 250# SWP, FULL PORT ⑬ DRAIN VALVE AT CONDENSATE RISER LOW POINT 3/4" BALL VALVE, BRONZE, 150# SWP, FULL PORT ⑭ TUBE PULL CLEARANCE |
|---|---|